

Corine land cover classes

1. Artificial surfaces

1.1 Urban fabric

1.1.1 Continuous urban fabric

1.1.2 Discontinuous urban fabric

1.2 Industrial, commercial and transport units

1.2.1 Industrial or commercial units

1.2.2 Road and rail networks and associated land

1.2.3 Port areas

1.2.4 Airports

1.3 Mine, dump and construction sites

1.3.1 Mineral extraction sites

1.3.2 Dump sites

1.3.3 Construction sites

1.4 Artificial, non-agricultural vegetated areas

1.4.1 Green urban areas

1.4.2 Sport and leisure facilities

2. Agricultural areas

2.1 Arable land

2.1.1 Non-irrigated arable land

2.1.2 Permanently irrigated land

2.1.3 Rice fields

2.2 Permanent crops

2.2.1 Vineyards

2.2.2 Fruit trees and berry plantations

2.2.3 Olive groves

2.3 Pastures

2.3.1 Pastures

2.4 Heterogeneous agricultural areas

2.4.1 Annual crops associated with permanent crops

2.4.2 Complex cultivation patterns

2.4.3 Land principally occupied by agriculture

2.4.4 Agro-forestry areas

3. Forest and seminatural areas

3.1 Forests

3.1.1 Broad-leaved forest

3.1.2 Coniferous forest

3.1.3 Mixed forest

3.2 Shrub and/or herbaceous vegetation associations

3.2.1 Natural grassland

3.2.2 Moors and heathland

3.2.3 Scrubland/low vegetation

3.2.4 Transitional woodland shrub

3.3 Open spaces with little or no vegetation

3.3.1 Beaches, dunes, and sand plains

3.3.2 Bare rock

3.3.3 Sparsely vegetated areas

3.3.4 Burnt areas

3.3.5 Cladonia and perpetual snow

4. Wetlands

4.1 Inland wetlands

4.1.1 Inland marshes

4.1.2 Peat bogs

4.2 Coastal wetlands

4.2.1 Salt marshes

4.2.2 Salines

4.2.3 Hardened flats

5. Water bodies

5.1 Inland waters

5.1.1 Water courses

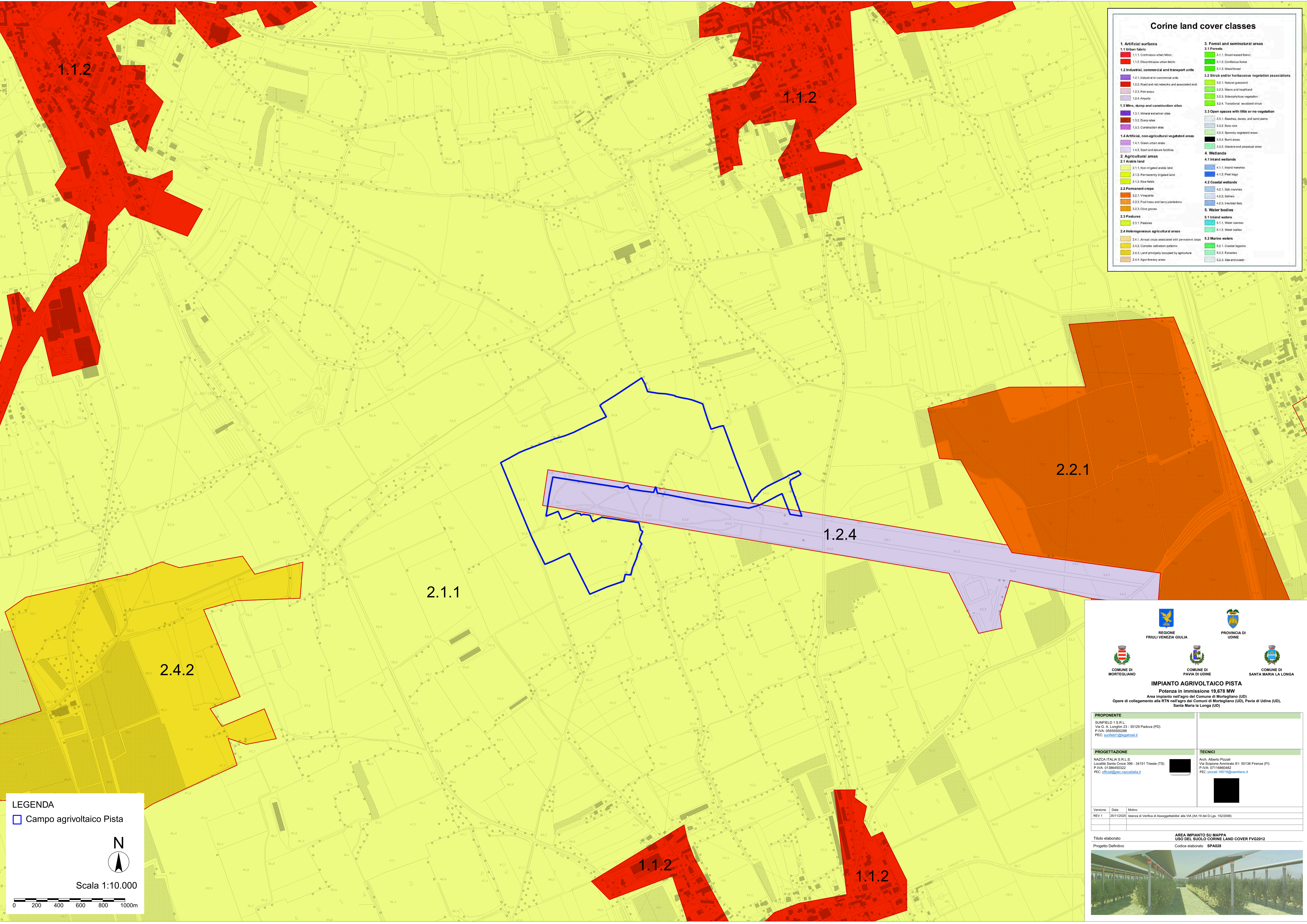
5.1.2 Water bodies

5.2 Marine waters

5.2.1 Coastal lagoons

5.2.2 Estuaries

5.2.3 Sea and ocean



LEGENDA

□ Campo agrivoltaico Pista

N

Scala 1:10.000

0 200 400 600 800 1000m

REGIONE  
FRIULI VENEZIA GIULIA

COMUNE DI  
MORTEGLIANO

PROVINCIA DI  
UDINE

COMUNE DI  
PAVIA DI UDINE

COMUNE DI  
SANTA MARIA LA LONGA

IMPIANTO AGRIVOLTAICO PISTA

Potenza in Immissione 19 678 MW

Area Impianto nell'agro del Comune di Mortegliano (UD)

Opere di collegamento alla RTN nell'agro dei Comuni di Mortegliano (UD), Pavia di Udine (UD), Santa Maria la Longa (UD)

PROponente

SUNFIELD 1 S.R.L.  
Via G. A. Longhi 23 - 35129 Padova (PD)  
P.IVA: 0555500288  
PEC: [sunfield1@segmail.it](mailto:sunfield1@segmail.it)

Progettazione

NAZCA ITALIA S.R.L.S.  
Località Seta Croce 386 - 34151 Trieste (TS)  
P.IVA: 01389450322  
PEC: [office@pec.nazcatalia.it](mailto:office@pec.nazcatalia.it)

Tecnici

Arch. Alberto Pizzati  
Via Scipione Ammirato 81- 50136 Firenze (FI)  
P.IVA: 0711690492  
PEC: [pizzati.18519@comilano.it](mailto:pizzati.18519@comilano.it)

Versione	Data	Motivo
REV 1	25/11/2025	Istanza di Verifica di Assoggettabilità alla VIA (Art.19 del D.Lgs. 152/2006)

Titolo elaborato

AREA IMPIANTO SU MAPPA

Progetto Definitivo

Codice elaborato

SPA028